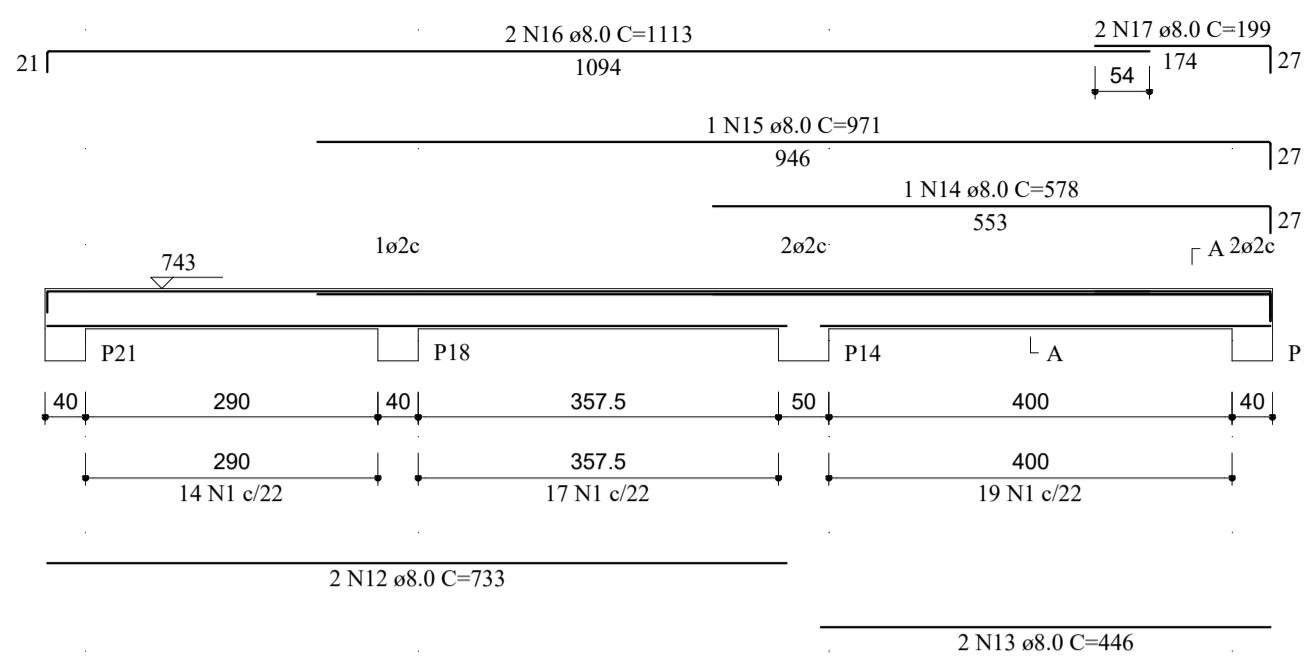
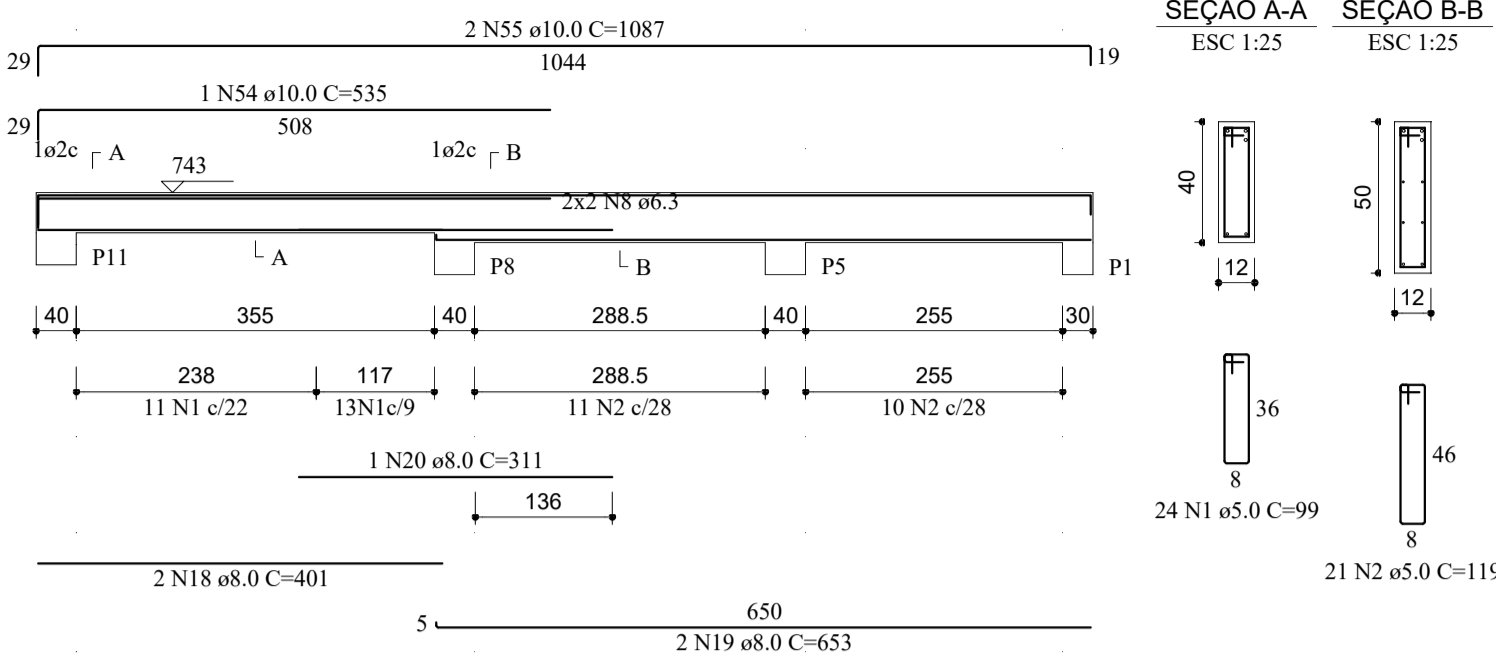


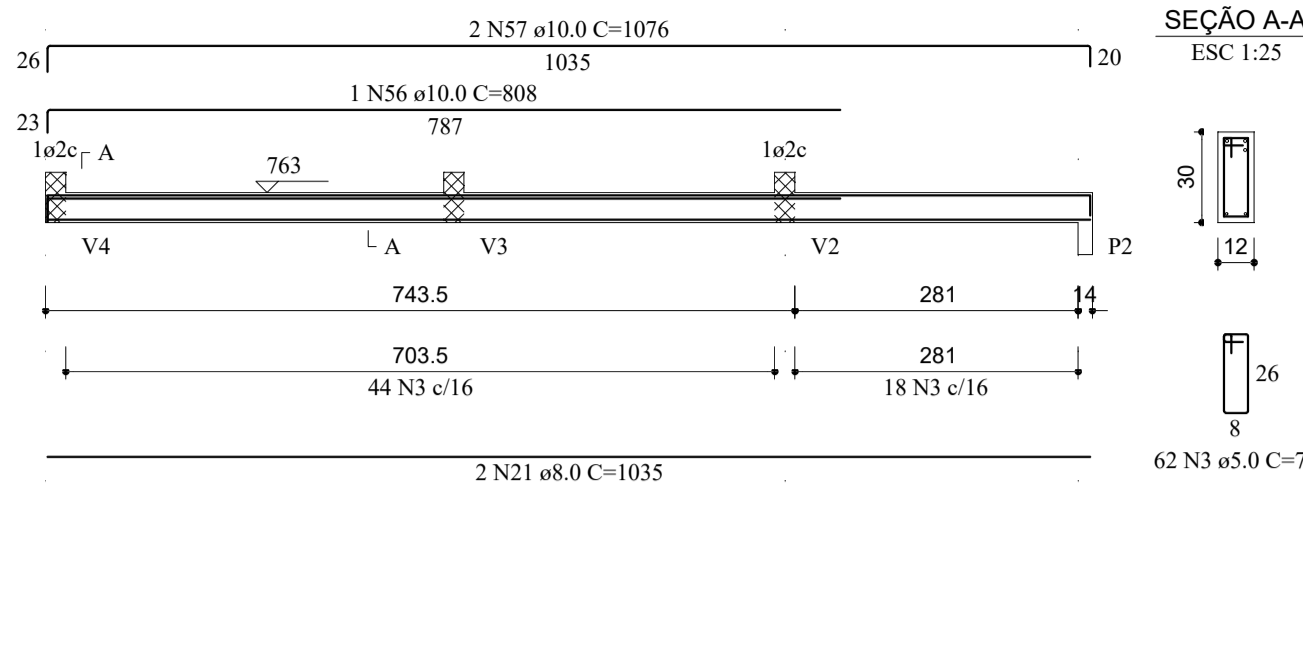
V19
ESC 1:75



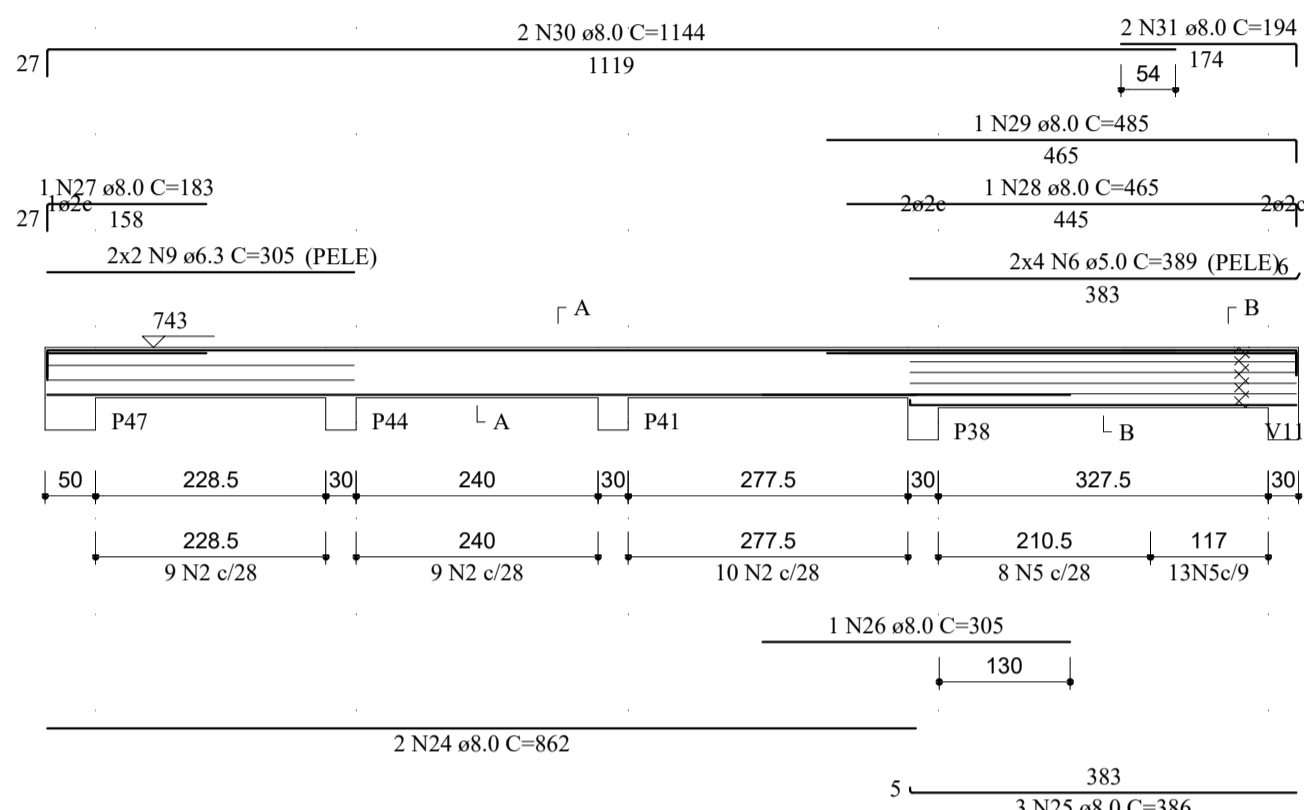
V20
ESC 1:75



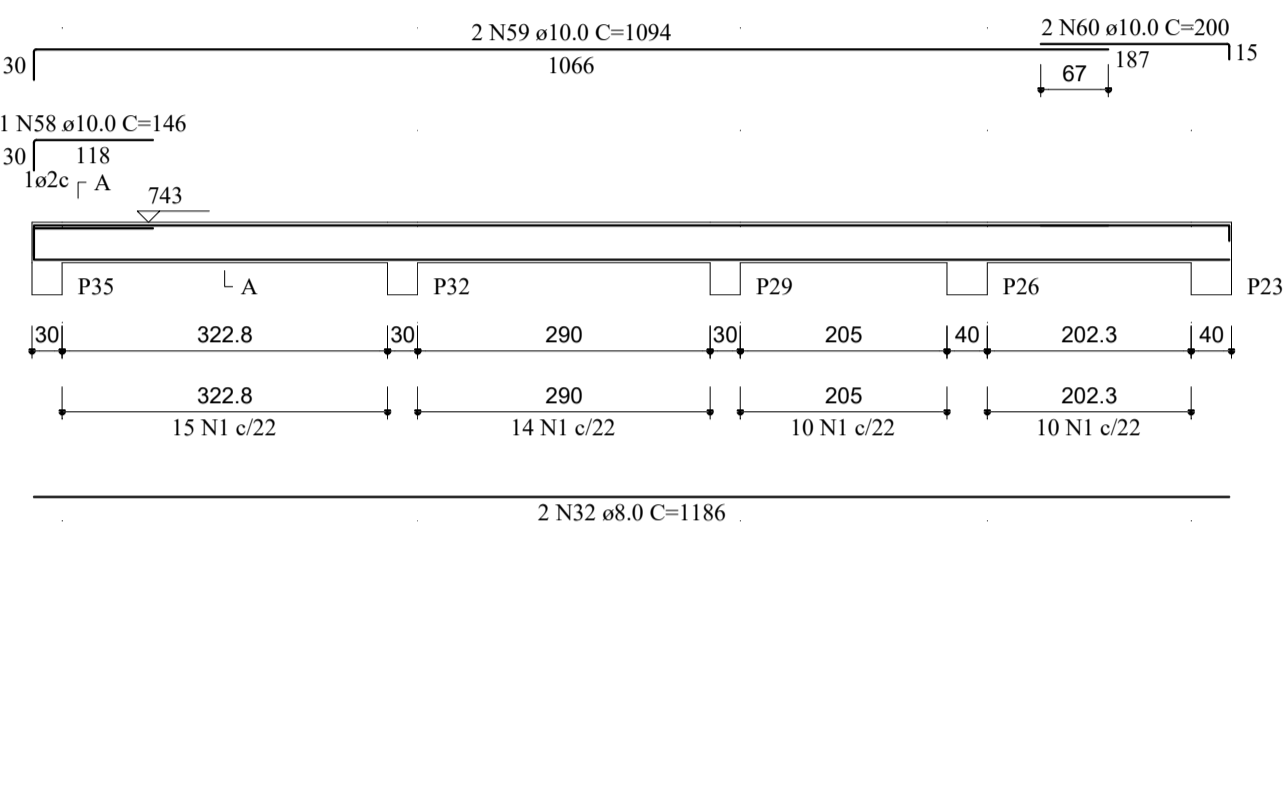
V21
ESC 1:75



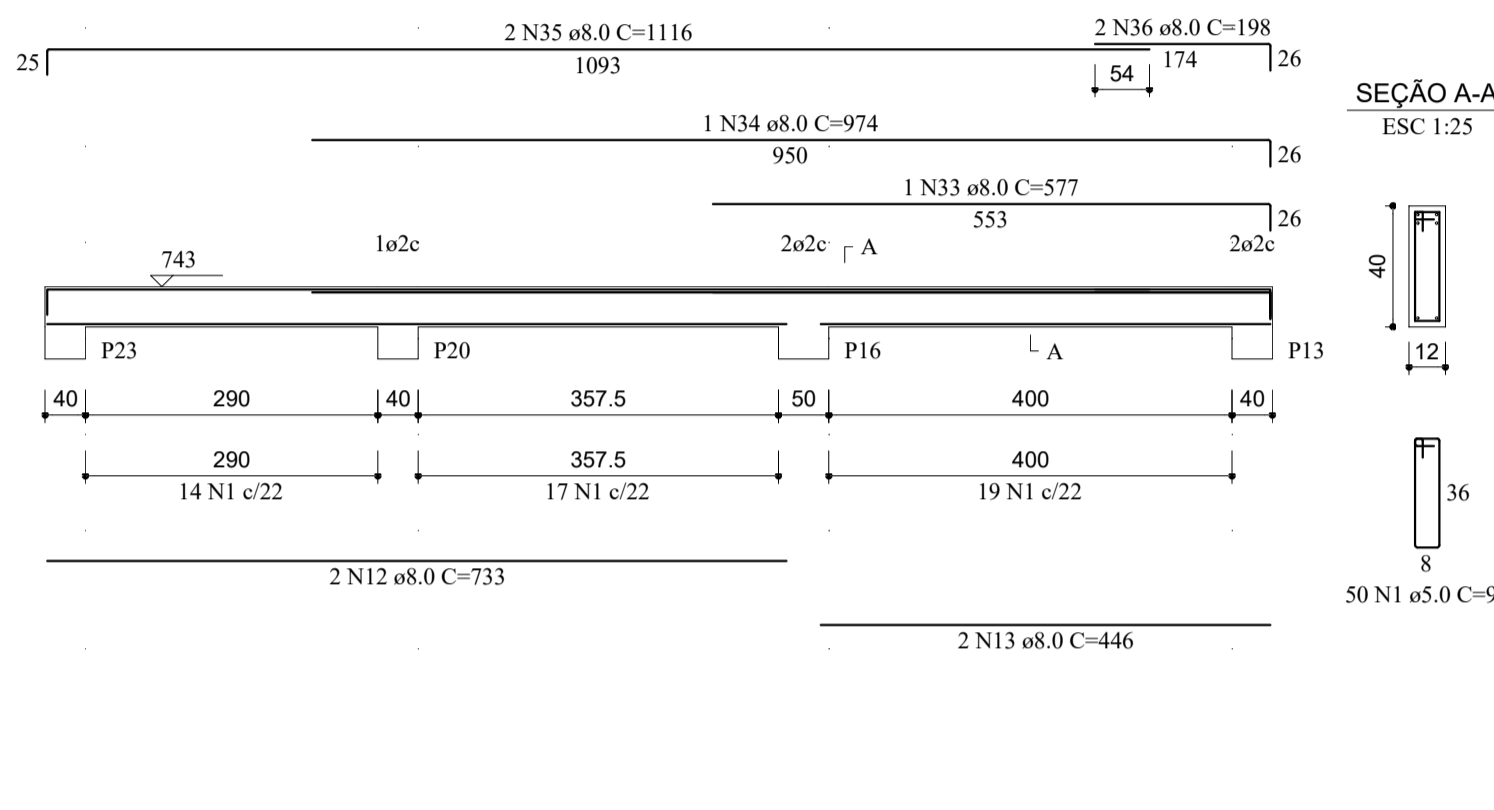
V23
ESC 1:75



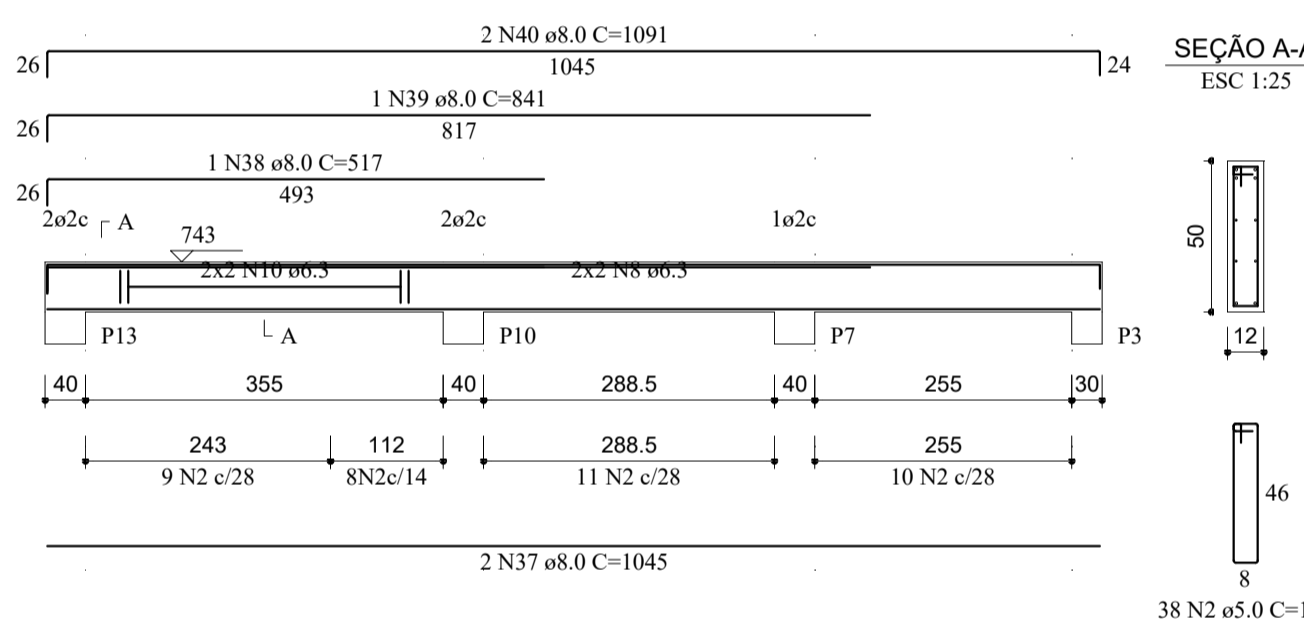
V24
ESC 1:75



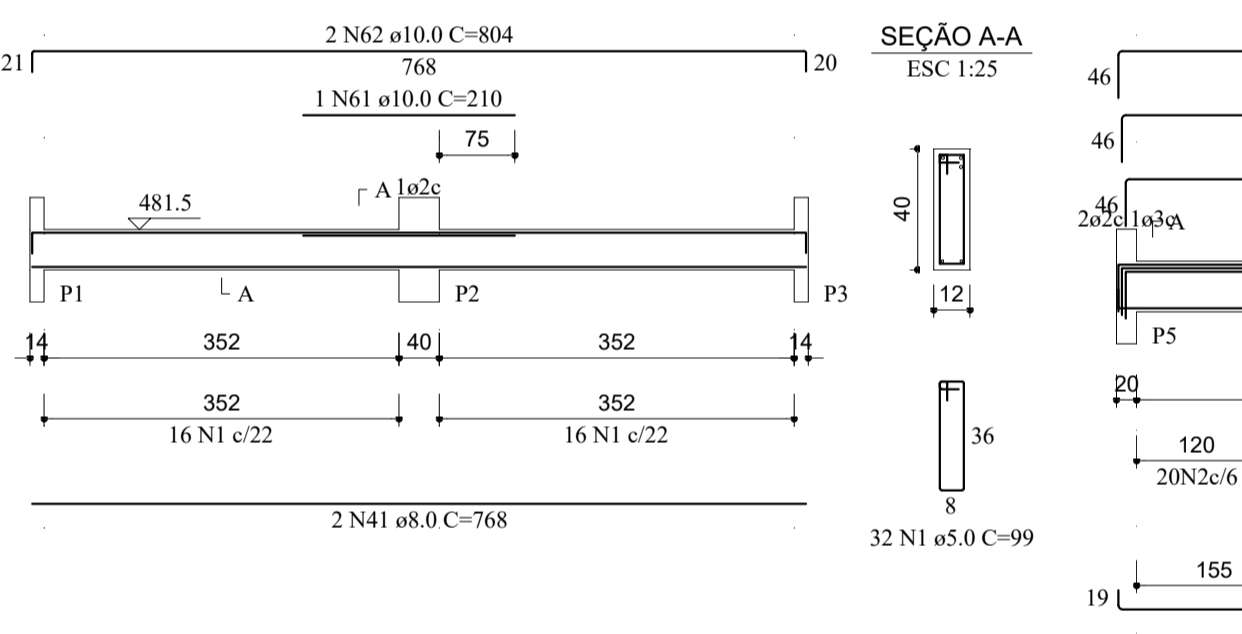
V25
ESC 1:75



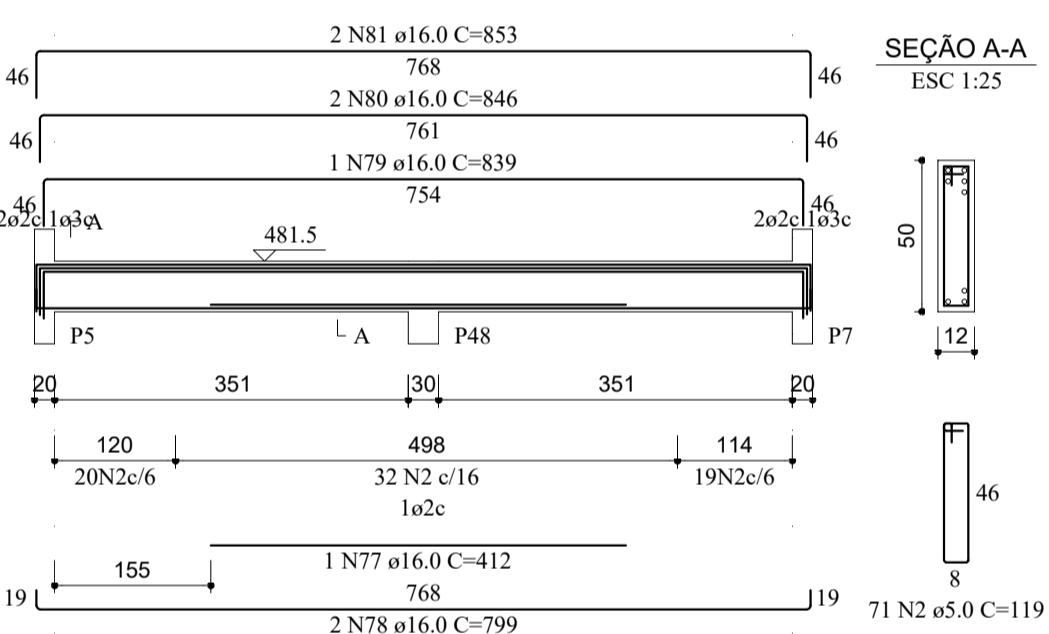
V26
ESC 1:75



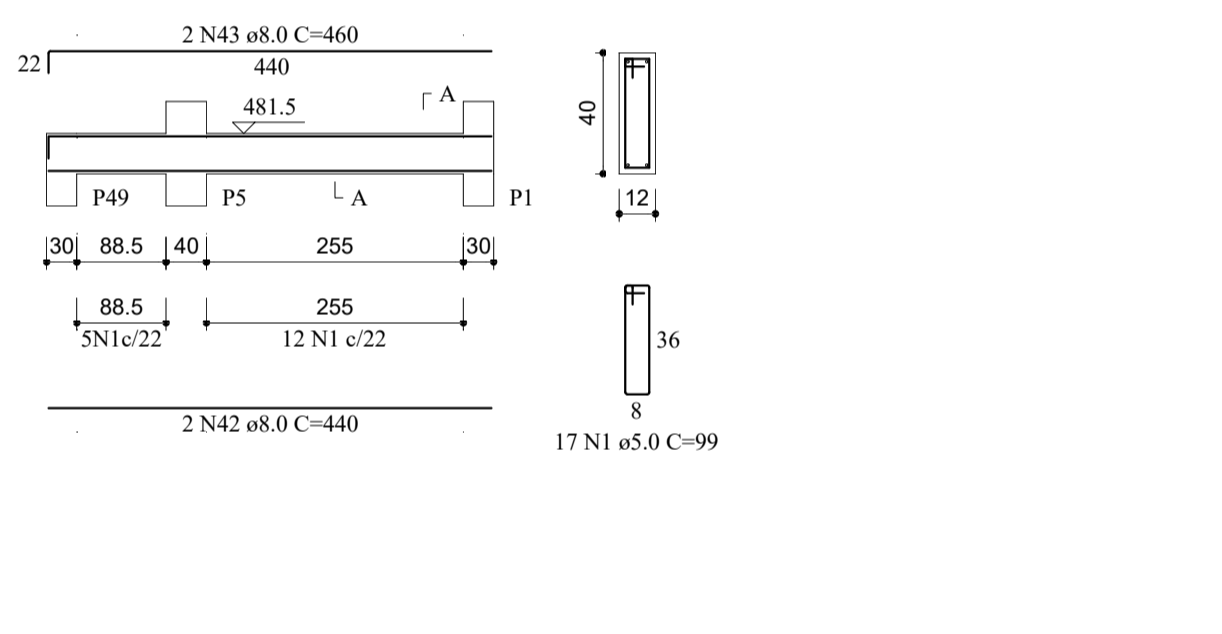
V27
ESC 1:75



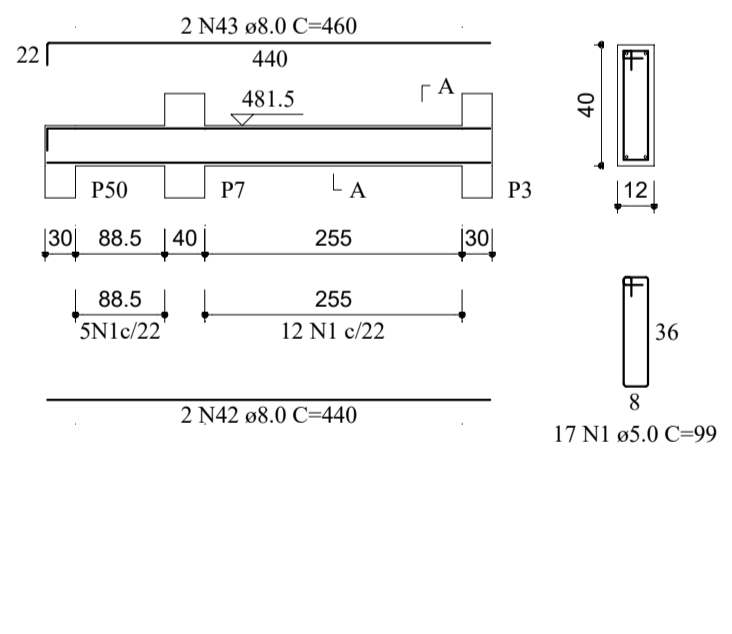
V28
ESC 1:75



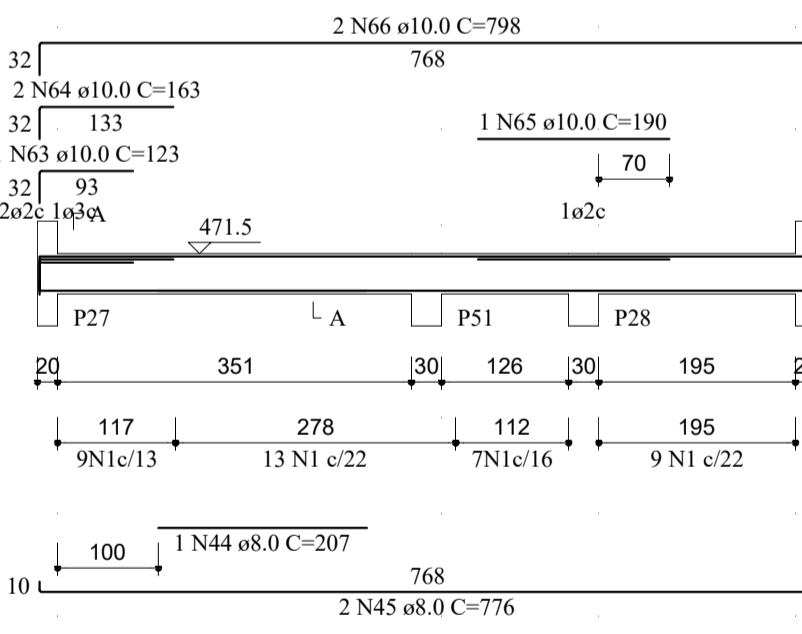
V29
ESC 1:75



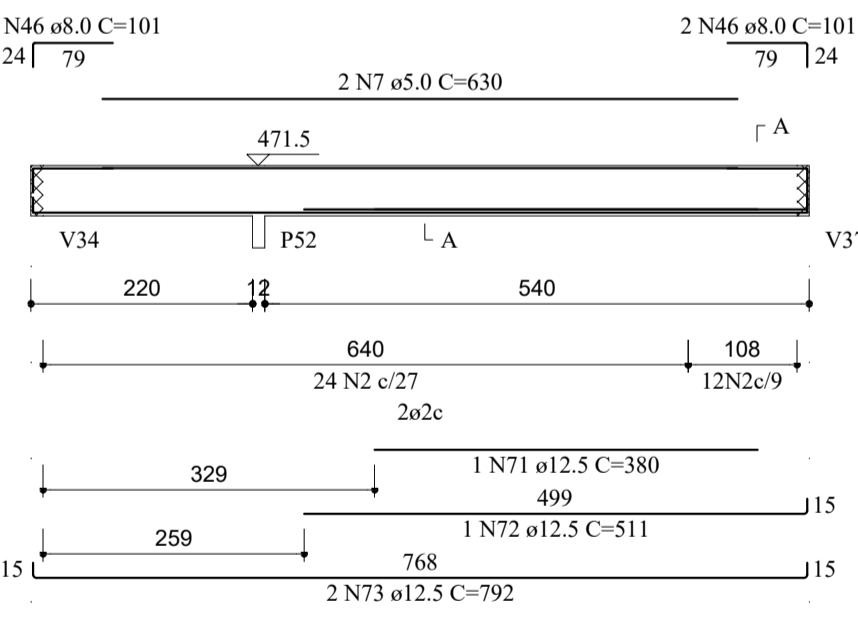
V30
ESC 1:75



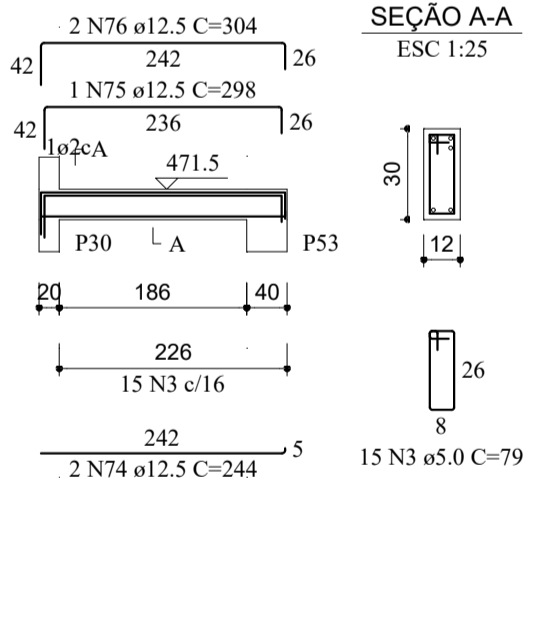
V31
ESC 1:75



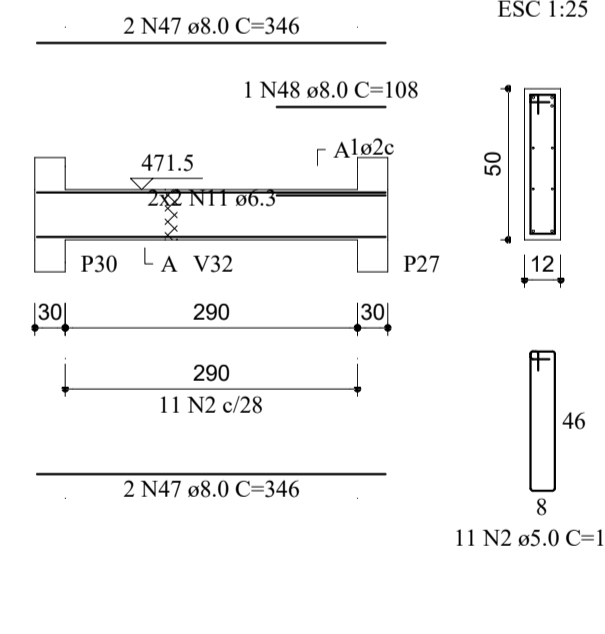
V32
ESC 1:75



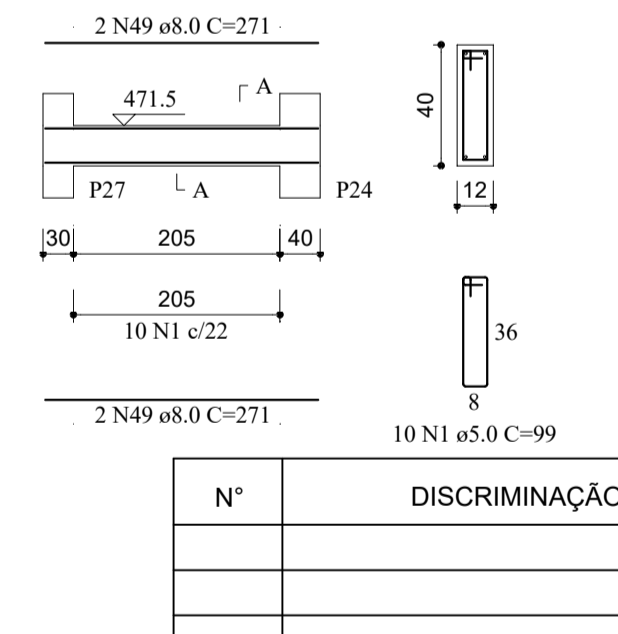
V33
ESC 1:75



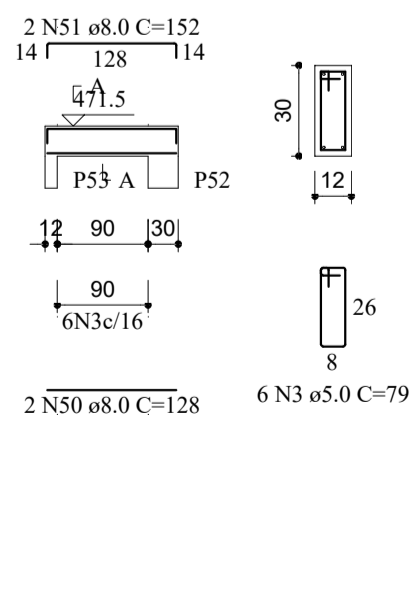
V34
ESC 1:75



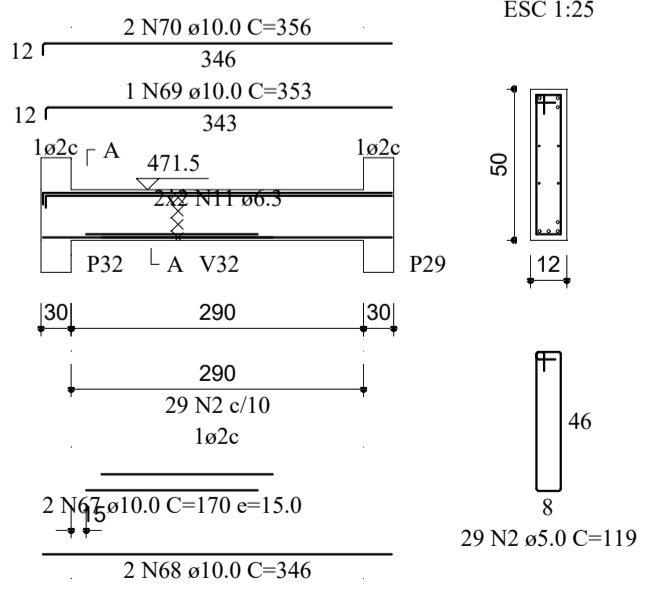
V35
ESC 1:75



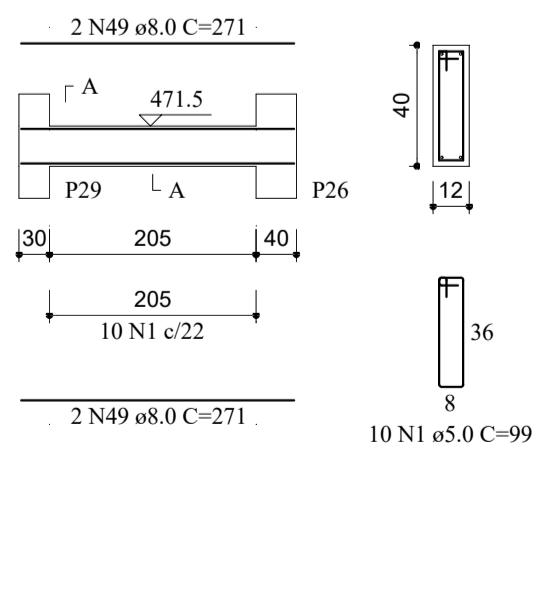
V36
ESC 1:75



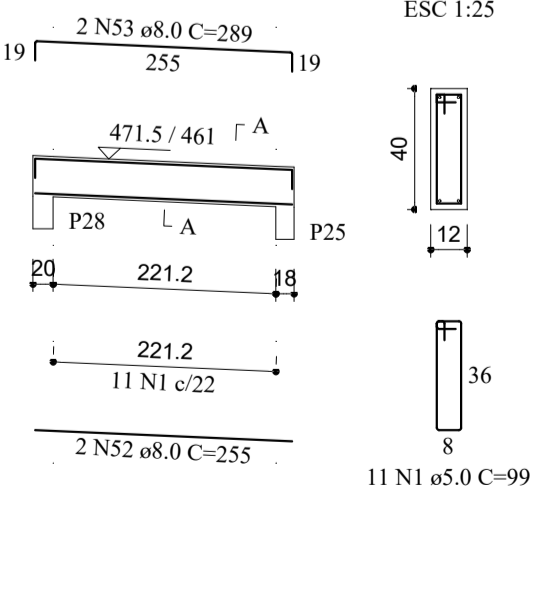
V37
ESC 1:75



V38
ESC 1:75



V39
ESC 1:75



RELAÇÃO DO AÇO

ACO	N	DIAM (mm)	QUANT	C.UNIT (cm)	C.TOTAL (cm)
CA60	1	5.0	308	99	30492
	2	5.0	234	119	27846
	3	5.0	83	79	6557
	4	5.0	21	139	2919
	5	5.0	8	389	3112
	6	5.0	2	630	1260
	7	5.0	2	630	1260
	8	6.3	8	corr	2920
	9	6.3	4	305	1220
	10	6.3	4	corr	1724
	11	6.3	8	corr	2768
	12	8.0	4	733	2932
	13	8.0	4	446	1784
	14	8.0	2	578	1156
	15	8.0	1	971	971
	16	8.0	2	1113	2226
	17	8.0	2	199	398
	18	8.0	2	401	802
	19	8.0	2	653	1306
	20	8.0	1	311	311
	21	8.0	2	1035	2070
	22	8.0	2	862	1724
	23	8.0	3	386	1158
	24	8.0	1	305	305
	25	8.0	1	183	183
	26	8.0	1	465	465
	27	8.0	1	485	485
	28	8.0	2	1144	2288
	29	8.0	2	194	388
	30	8.0	2	1186	2372
	31	8.0	2	577	1154
	32	8.0	1	577	577
	33	8.0	1	974	974
	34	8.0	2	1116	2232
	35	8.0	2	198	396
	36	8.0	2	1045	2090
	37	8.0	1	517	517
	38	8.0	1	841	841
	39	8.0	2	1091	2182
	40	8.0	2	152	304
	41	8.0	4	440	1760
	42	8.0	4	460	1840
	43	8.0	1	207	207
	44	8.0	2	776	1552
	45	8.0	4	101	404
	46	8.0	4	346	1384
	47	8.0	1	108	108
	48	8.0	8	271	2168
	49	8.0	2	128	256
	50	8.0	2	152	304
	51	8.0	2	255	510
	52	8.0	2	289	578
	53	8.0	2	289	578
	54	10.0	1	535	535
	55	10.0	2	1087	2174
	56	10.0	1	808	808
	57	10.0	2	1076	2152
	58	10.0	1	146	146
	59	10.0	2	1094	2188
	60	10.0	2	200	400
	61	10.0	1	210	210
	62	10.0	2	804	1608
	63	10.0	1	123	123
	64	10.0	2	163	326
	65	10.0	1	190	190
	66	10.0	2	798	1596
	67	10.0	2	170	340
	68	10.0	2	346	692
	69	10.0	1	353	353
	70	10.0	2	356	712
	71	12.5	1	380	380
	72	12.5	1	511	511
	73	12.5	2	792	1584
	74	12.5	2	244	488
	75	12.5	1	298	298
	76	12.5	2	304	608
	77	16.0	1	412	412
	78	16.0	2	799	1598
	79	16.0	1	839	839
	80	16.0	2	846	1692
	81	16.0	2	853	1706

RESUMO DO AÇO

ACO	DIAM (mm)	C.TOTAL (m)	PESO + 10% (kg)
CA50	6.3	86.3	23.2
	8.0	451.6	196
	10.0	145.5	98.7
	12.5	38.7	41
	16.0	62.5	108.5
	5.0	722	122.4
CA60			
PESO TOTAL (kg)			
CA50		467.4	
CA60		122.4	

Volume de concreto (C-30) = 7.17 m³
Área de forma = 136.28 m²

Nº	DISCRIMINAÇÃO DAS REVISÕES	DATA	APROVAÇÃO

Obra: **Escola de Gestão, Iguaba Grande, RJ.**

Projeto: Eng. Claudio Guimarães
CREA 19881002470 - RJ

Proprietário: _____
Cliente ou Proprietário da Obra

Projeto: **PROJETO ESTRUTURAL**

Descrição: **Vigas do 1º pavimento - B (Com níveis inferiores)**

12-B

Data: 28/07/2023 | Escala: _____ | Desenho: CIG | Conferência: CIG