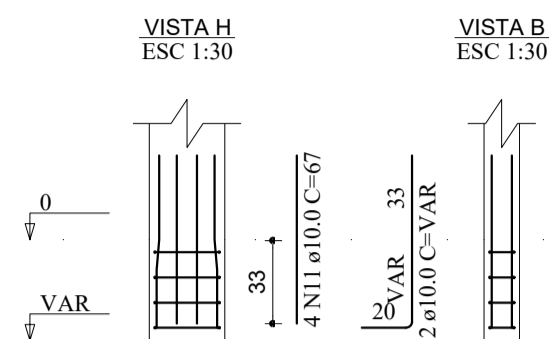
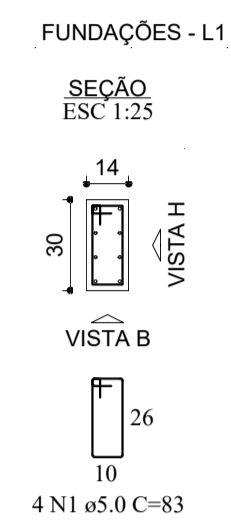
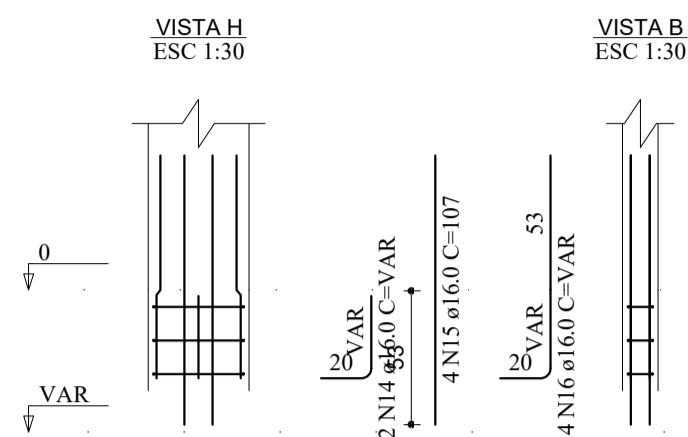
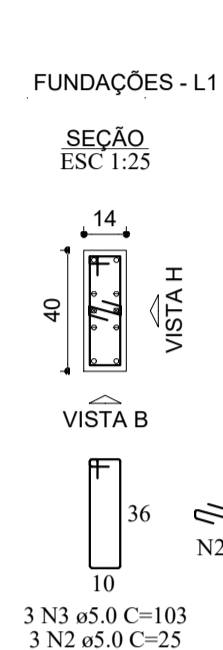


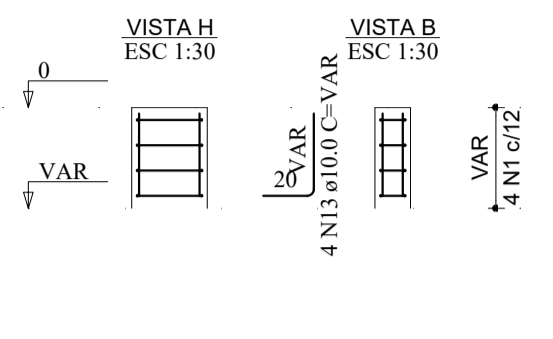
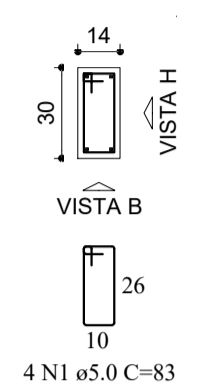
P1=P3



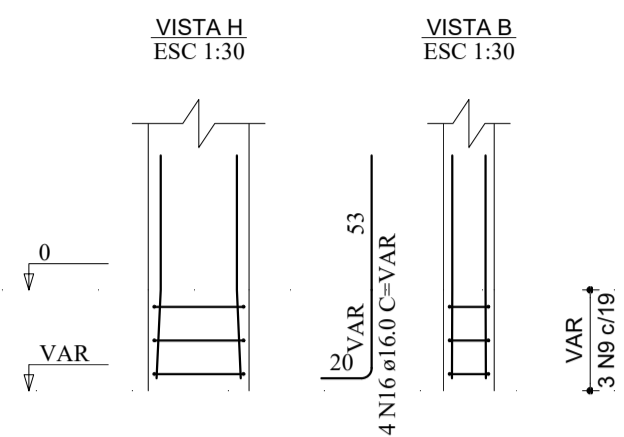
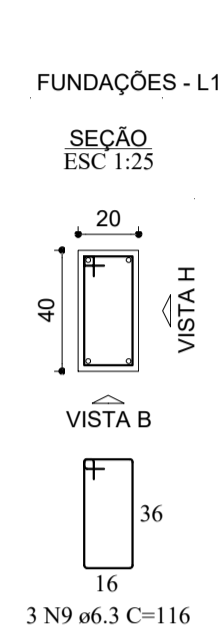
P2



P4=P6



P5



RELAÇÃO DO AÇO

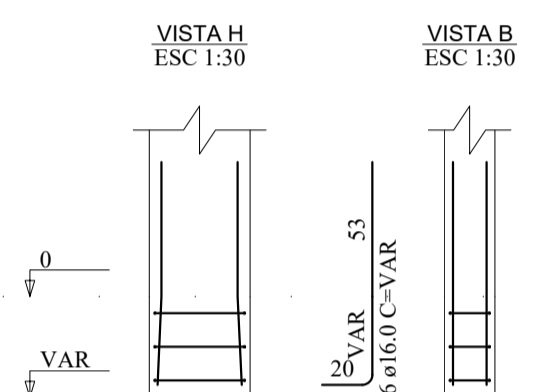
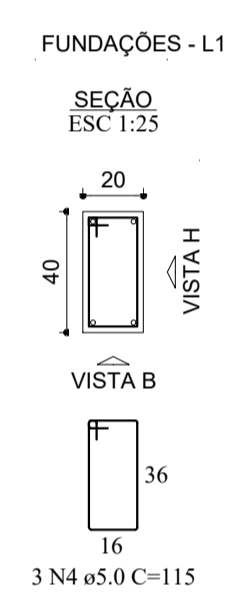
ACO	N	DIAM (mm)	QUANT	C.UNIT (cm)	C.TOTAL (cm)
CA60	1	5.0	40	83	3320
	2	5.0	3	25	75
	3	5.0	3	103	309
	4	5.0	21	115	2415
	5	5.0	2	31	62
	6	5.0	6	135	810
	7	5.0	4	31	124
	8	5.0	3	91	273
	9	6.3	6	116	696
	10	8.0	3	116	348
	11	10.0	8	67	536
	12	10.0	32	VAR	VAR
	13	10.0	14	VAR	VAR
	14	16.0	2	VAR	VAR
	15	16.0	44	107	4708
	16	16.0	44	VAR	VAR
	17	16.0	2	VAR	VAR
	18	16.0	4	VAR	VAR
	19	16.0	4	VAR	VAR

RESUMO DO AÇO

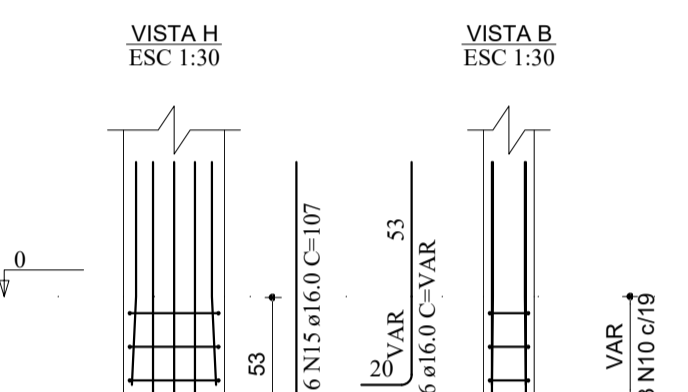
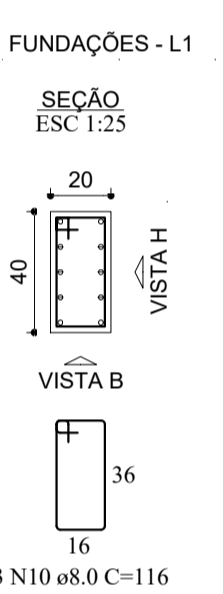
ACO	DIAM (mm)	C.TOTAL (m)	PESO + 10% (kg)
CA50	6.3	7	1.9
	8.0	3.5	1.5
	10.0	40	27.1
	16.0	103	178.9
	5.0	73.9	12.5
PESO TOTAL (kg)			
CA50		209.4	
CA60		12.5	

Volume de concreto (C-30) = 0.61 m³
Área de forma = 10.23 m²

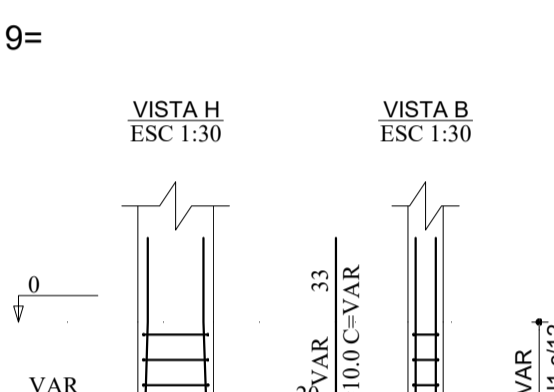
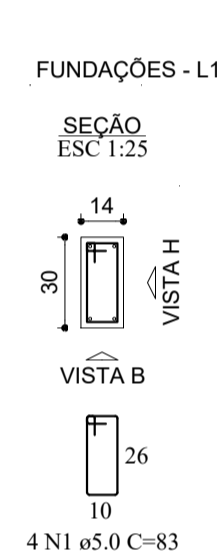
P7=P23



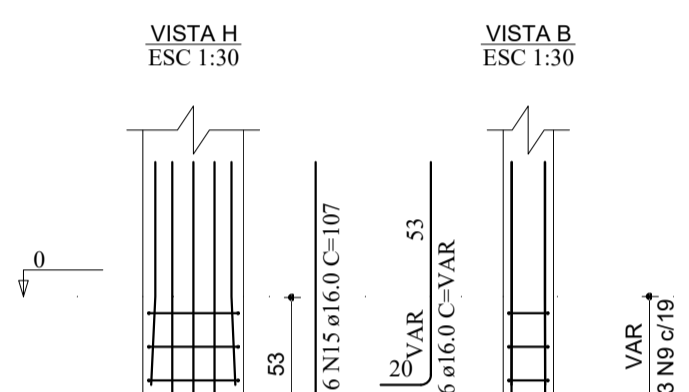
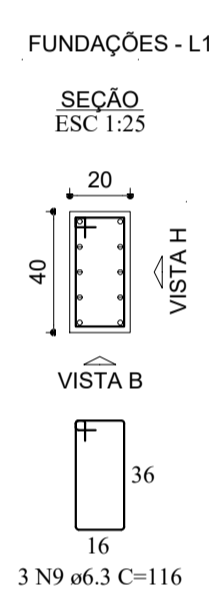
P8



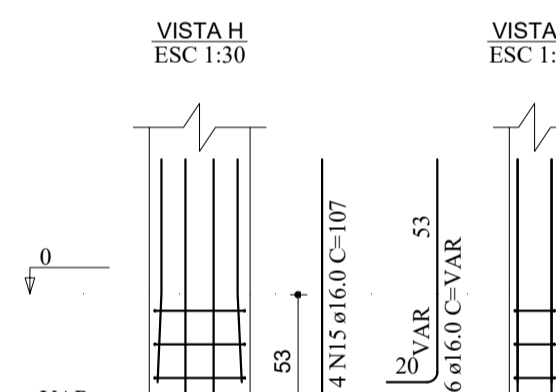
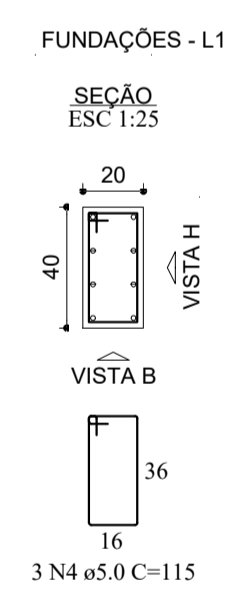
P9=P12=P15=P17=P19=
=P46



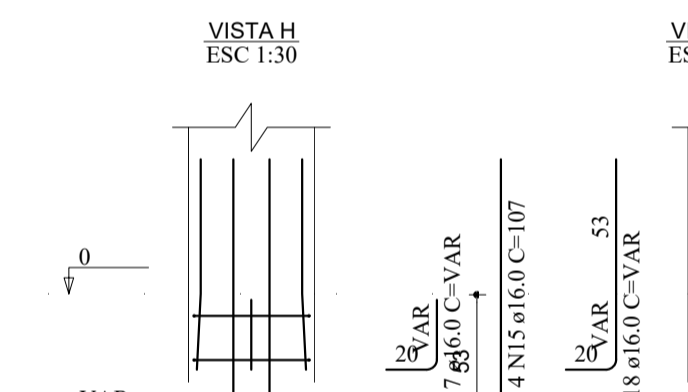
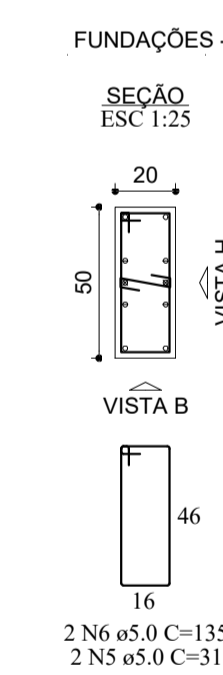
P10



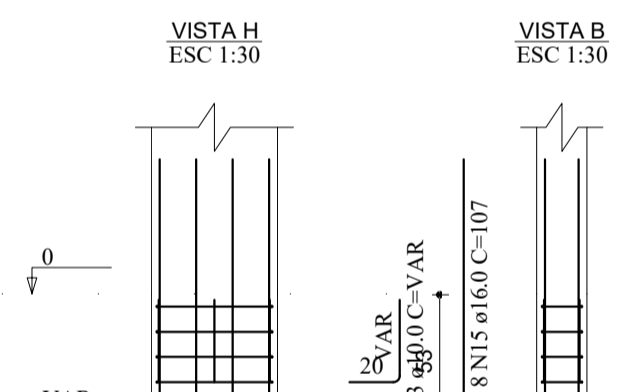
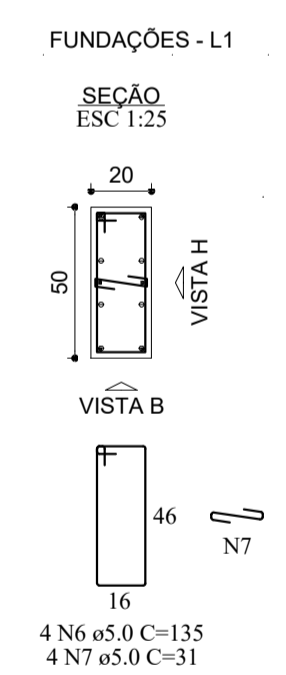
P11=P13



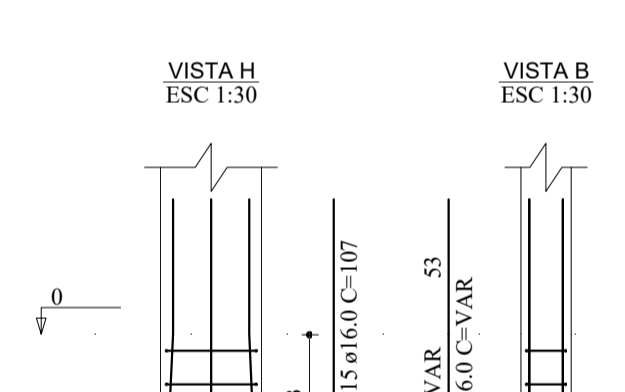
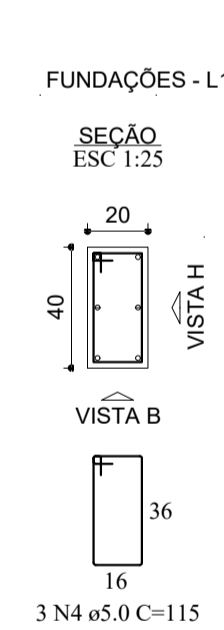
P14



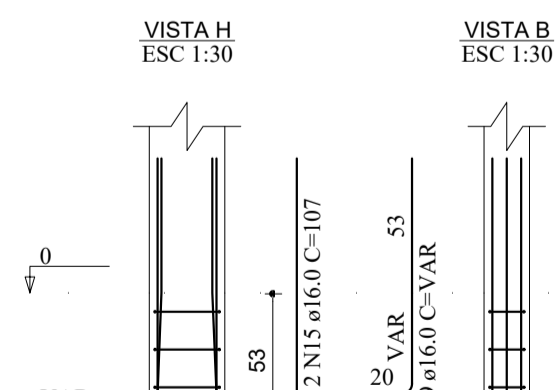
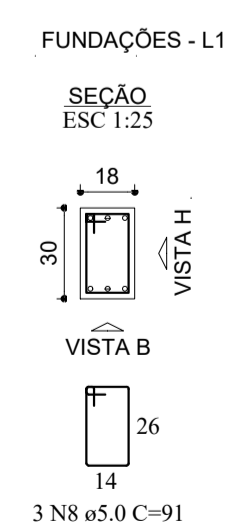
P16



P18=P20=P21



P22



Nº	DISCRIMINAÇÃO DAS REVISÕES	DATA	APROVAÇÃO

Obr: Escola de Gestão, Iguaba Grande, RJ.

Projeto: Eng. Claudio Guimarães
CREA 19881002470 - RJ

Proprietário: Cliente ou Proprietário da Obra

Projeto: PROJETO ESTRUTURAL

Descrição: Arranques dos pilares - A

Folha: 04-A

Data: 28/07/2023 Escala: Desenho: CIG Conferência: CIG