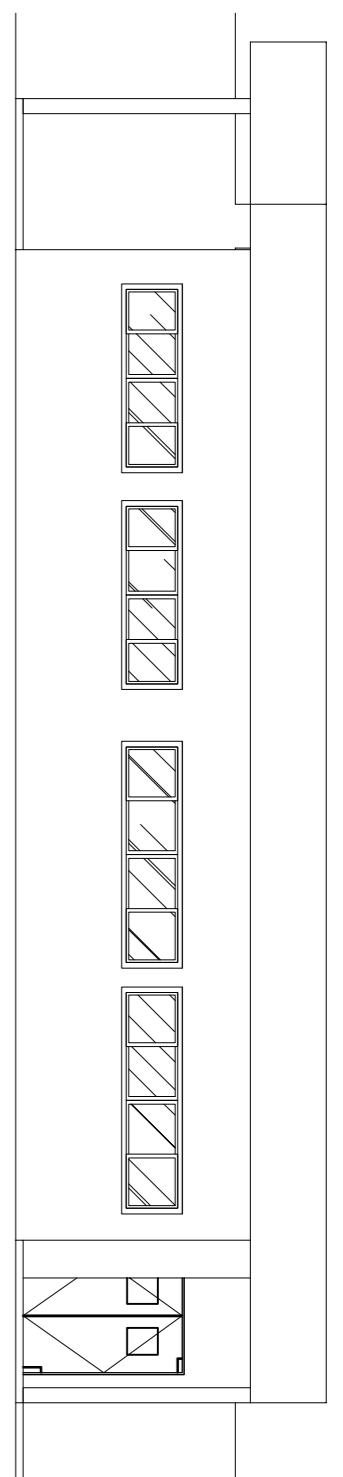
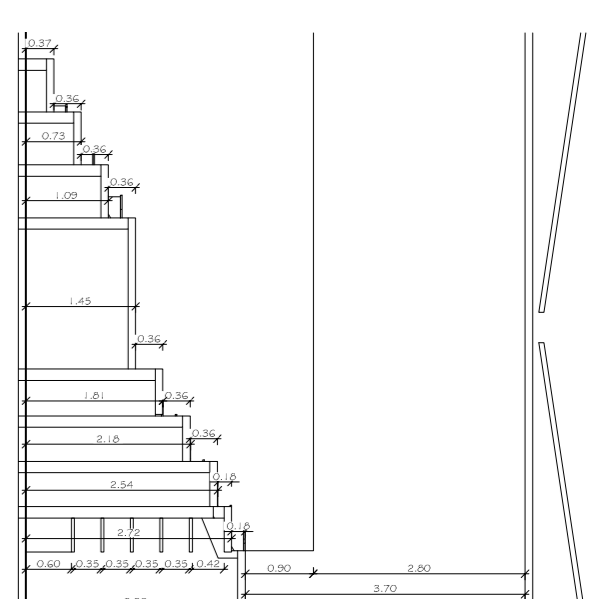


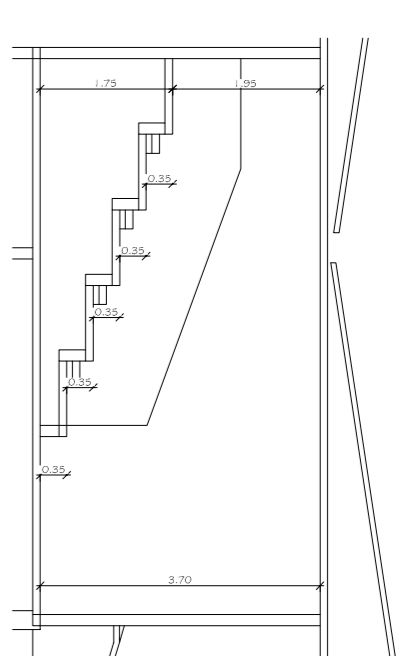
06 FACHADA FRONTAL ANEXO
ESC: 1/100



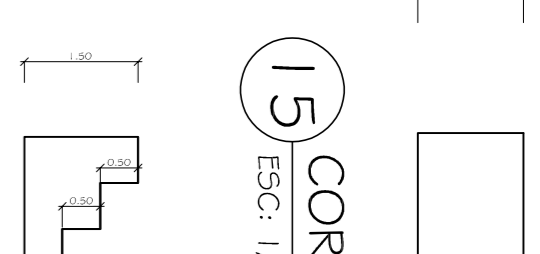
08 FACHADA LATERAL ANEXO
ESC: 1/100



10 CORTE FP
ESC: 1/100

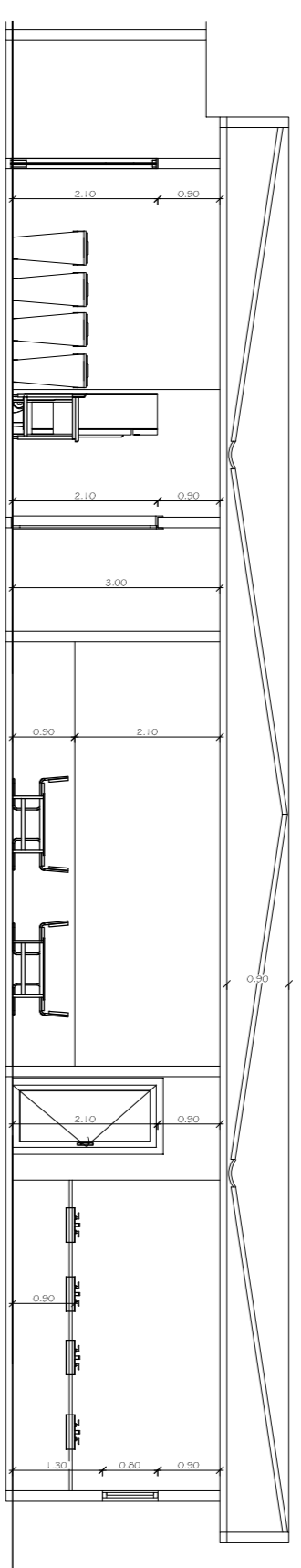


12 CORTE HH'
ESC: 1/100

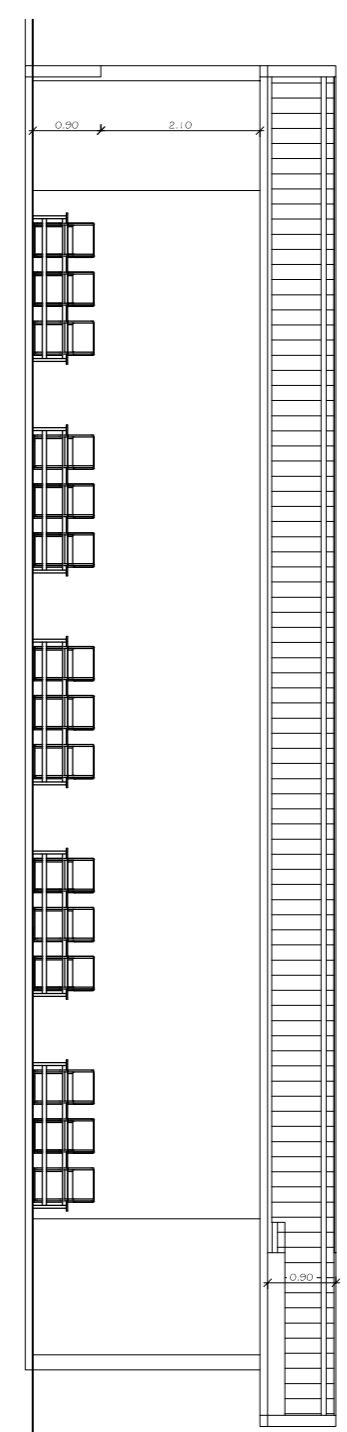


15 CORTE KK'
ESC: 1/100

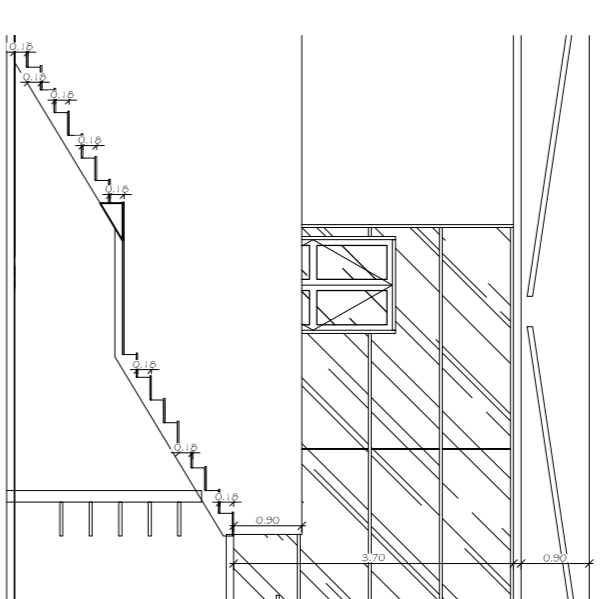
14 CORTE JJ'
ESC: 1/100



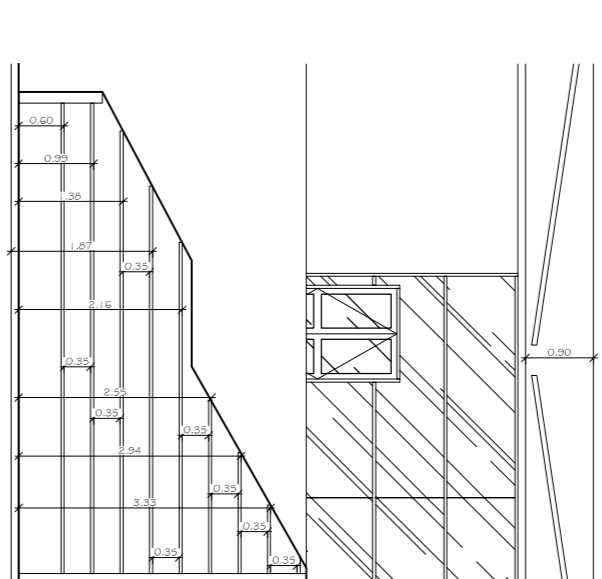
05 CORTE CC
ESC: 1/100



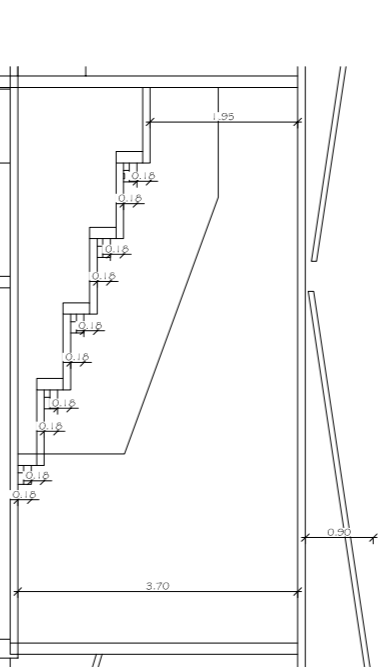
07 CORTE DD'
ESC: 1/100



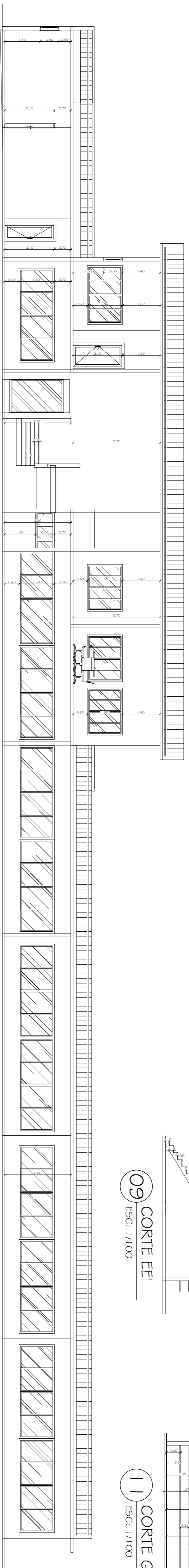
09 CORTE EE'
ESC: 1/100



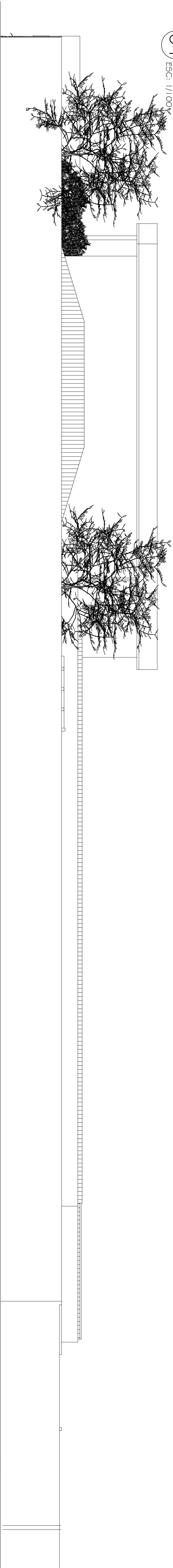
11 CORTE GG'
ESC: 1/100



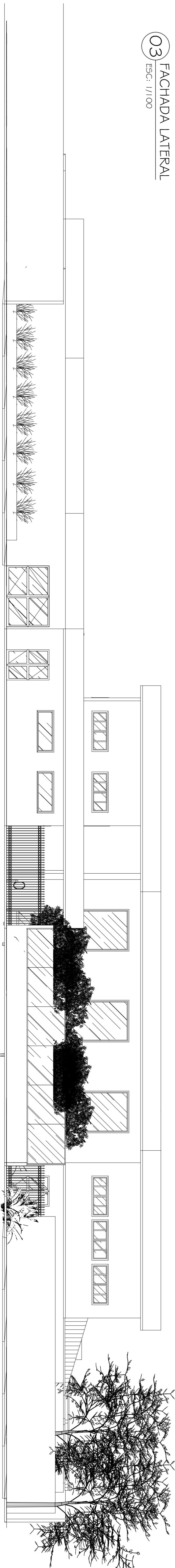
13 CORTE II'
ESC: 1/100



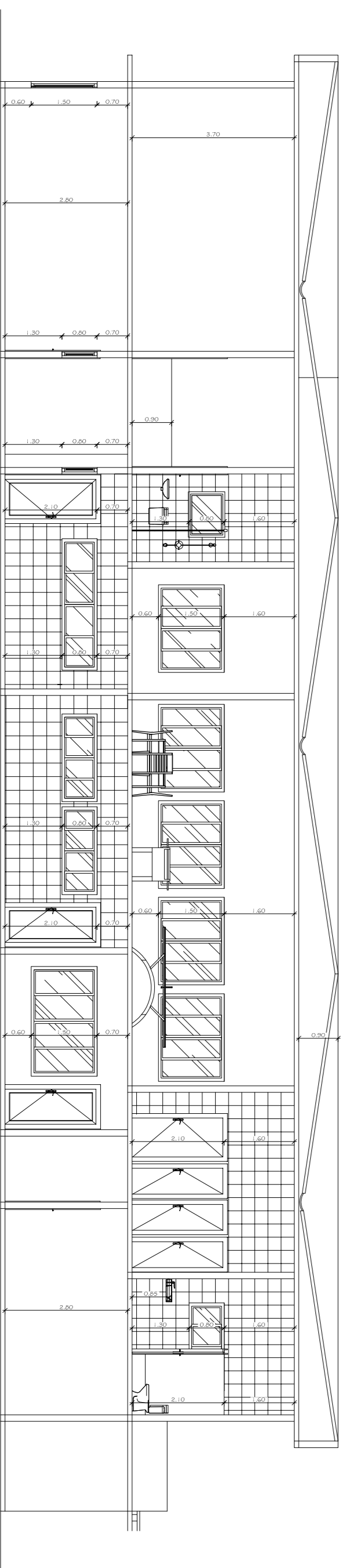
04 CORTE BB'
ESC: 1/100



03 FACHADA LATERAL
ESC: 1/100



02 FACHADA FRONTAL
ESC: 1/100



01 CORTE AA'
ESC: 1/100

PREFEITURA MUNICIPAL DE IGUABA
GRANDE

PROJETO: Projeto Para Modificação e acréscimo da Escola Municipal Professora Maria Lucia de Oliveira Costa, Centro, Iguaçu Grande-RJ

RESPONSÁVEL TÉCNICO: APROVAÇÃO:

OBS.: APROVAÇÃO DE MODIFICAÇÃO E ACRÉSCIMO

DATA: MAIO/2022 ESCALA: INDICADA FOLHA: 04/05